

DESCRIPTION:

AMC MODEL SWN-RRA-2DT-COMDEV IS A SINGLE POLE TWO THROW NARROW BAND TERMINATED SWITCH MODULE, DESIGNED FOR THE 8.3 TO 11.7 GHz FREQUENCY RANGE. THIS 80 dB ISOLATION SWITCH INCORPORATES A SWEEP SMA CONNECTOR ON THE COMMON ARM FACING J2.

SPECIFICATIONS:

- FREQUENCY: 8.3 TO 11.7 GHz
- INSERTION LOSS: 3.0 dB MAXIMUM
 - VS. FREQUENCY: ± 0.5 dB MAX WITH RESPECT TO NOMINAL INSERTION LOSS
 - VS. TEMPERATURE: ± 0.3 dB MAX WITH RESPECT TO NOMINAL INSERTION LOSS
- NOMINAL INSERTION LOSS IS DEFINED AS THE VALUE MEASURED AT AN AMBIENT TEMPERATURE OF 25°C AT THE CENTER FREQUENCY OF 10.0 GHz
- ISOLATION: 80 dB MINIMUM
- VSWR (ALL PORTS): 2.0:1 MAXIMUM
- SWITCHING SPEED: 30 nS MAXIMUM (10% - 90% AND 90% - 10% RF)
- HARMONIC LEVELS: -30 dBc UNDER MAX INPUT CONDITIONS
- SPURIOUS OUTPUT: -115 dBc MAX, UP TO 200 MHz AWAY FROM 10 GHz AT AN INPUT POWER LEVEL OF -3 dBm
- THIRD ORDER INTERCEPT: +42dBm MINIMUM
- MEAN TIME BETWEEN FAILURES: 1,000,000 HOURS
- POWER SUPPLY: +5.0VDC ±5% @ 80 mA MAXIMUM
-12.0VDC ±5% @ 50mA MAXIMUM
- RF INPUT POWER: +23 dBm CW MAXIMUM

CONTROL INPUTS		STATE
C1	C2	
0	0	NOT VALID
0	1	*J1-J2 ON, J1-J3 OFF
1	0	*J1-J2 OFF, J1-J3 ON
1	1	BOTH OFF

*J1-J2 CORRESPONDS TO RF1, J1-J3 CORRESPONDS TO RF2

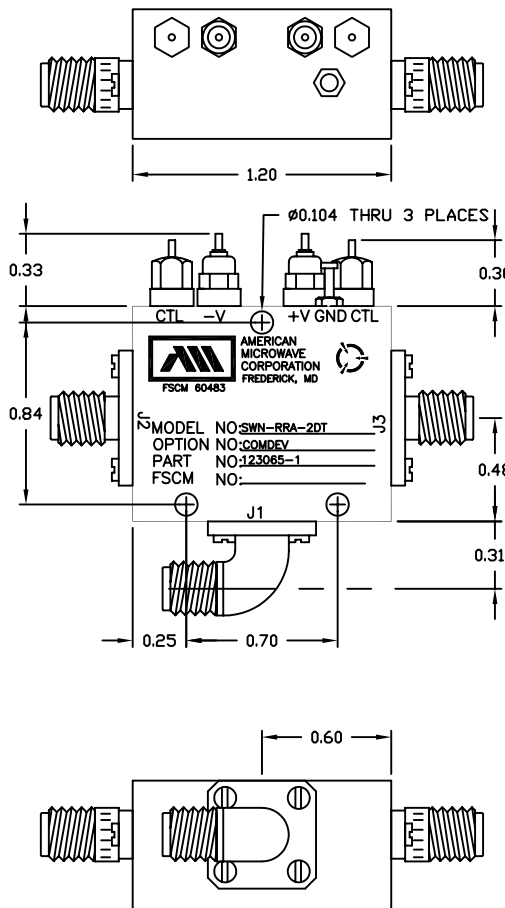
ENVIRONMENTAL RATINGS:

- TEMPERATURE: -55°C TO +85°C (OPERATING)
-65°C TO +125°C (STORAGE)
- HUMIDITY: MIL-STD-202F, METHOD 103B COND. B
- SHOCK: MIL-STD-202F, METHOD 213B COND. B
- VIBRATION: MIL-STD-202F, METHOD 204D COND. B
- ALTITUDE: MIL-STD-202F, METHOD 105C COND. B
- TEMPERATURE CYCLE: MIL-STD-202F, METHOD 107D COND. A


NOTE: THE ABOVE SPECIFICATIONS ARE SUBJECT TO CHANGE OR REVISION

ALL DIMENSIONS ARE IN INCHES
TOLERANCES:
X.XX ±0.010
X.XXX ±0.005

REVISIONS				
ZONE	REV.	DESCRIPTION	DATE	APPROVED
	-	ORIGINAL RELEASE JOB #207109-1	1/19/04	



MECHANICAL OUTLINE

PART NO.		 AMERICAN MICROWAVE CORPORATION FREDERICK, MARYLAND		
APPROVALS	DATE	TITLE		
DRAWN	1/19/04	PRODUCT FEATURE SWN-RRA-2DT-COMDEV 123065-1 REV 2		
CHECKED		SIZE	FSCM NO.	DWG NO.
ISSUED		A	60483	100-6916
		SCALE	SHEET	
		N:S	1 OF 3	